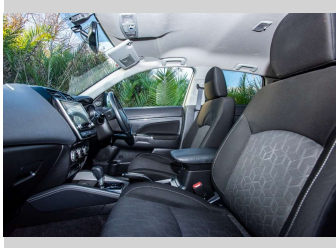
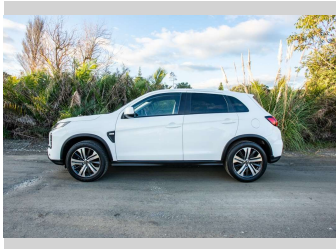


2020 Mitsubishi asx LS 2.0P/CVT



Purchase Price

\$21,500

Includes GST, Registration & Licensing

Finance may be available on this vehicle. Ask one of our friendly staff for more information.

Gain peace of mind with Mechanical Breakdown Insurance. **Ask us how.**

Top features

- » Air Conditioning
- » Blue tooth
- » Car Alarm
- » Central Locking
- » Child seat anchor poin...
- » Climate Control
- » cruise control
- » Digital Display
- » Electric Mirrors
- » Reverse camera

Body Style

5 door, Station Wagon

Odometer

126,472 km

Engine

1998 cc, Internal Combustion

Fuel Type

Petrol

Transmission

automatic

Wheels

Factory Alloys

VIN

JMFXTGA2WMU004318

Interior

Cloth

Safety



Based on 2024 UCSR rating for 19-22 models

Reg No.

NEL673

Ext Colour

White

History

NZ New

Seats

5 seats, Cloth

CO2 Emissions

★★★★☆

196 grams/km

Energy Economy

★★☆☆☆☆

**Annual fuel cost of \$3,330
8.5L per 100km**

Cost per year is an estimate based on petrol price of \$2.80 per litre and an average distance of 14000 km. Emissions and Energy Economy figures standardised to 3P WLTP.

Stock ID: 8543



Ray Scragg Motors Ltd | Phone 06 867 7947 | Email
rayscraggmotors@xtra.co.nz
265 Grey Street, Gisborne, New Zealand

