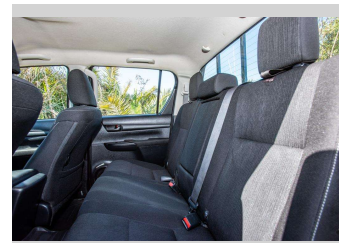
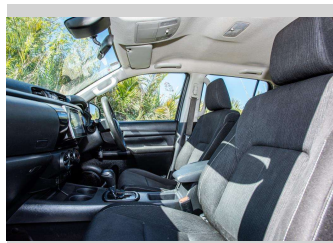
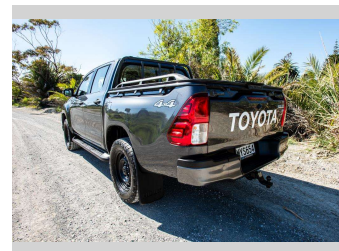
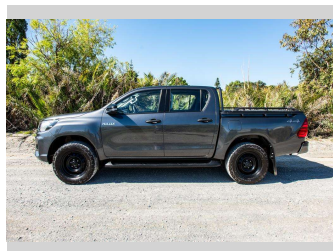


2020 Toyota Hilux SR TD DC 2.8DT/4WD



Purchase Price

Includes GST, Registration & Licensing

\$45,500

Finance may be available on this vehicle. Ask one of our friendly staff for more information.

Gain peace of mind with Mechanical Breakdown Insurance. **Ask us how.**

Top features

- » Air Conditioning
- » Blue tooth
- » Central Locking
- » Child seat anchor poin...
- » Climate Control
- » cruise control
- » Digital Display
- » Electric Mirrors
- » Electric Mirrors (Retr...
- » Face Lift Model
- » Reverse camera
- » Running Boards
- » T Custom Hard Lid
- » tuff-deck

Body Style

4 door, Ute

Odometer

131,334 km

Engine

2755 cc, Internal Combustion

Fuel Type

Diesel

Transmission

automatic, 4WD

Wheels

-

VIN

MR0KA3CD101244807

Interior

Cloth

Safety



Based on 2019 ANCAP rating for 19+ models

Reg No.

MYS654

Ext Colour

Grey

History

NZ New

Seats

5 seats, Cloth

CO2 Emissions

★ ★ ☆ ☆ ☆ ☆

252 grams/km

Energy Economy

★ ★ ☆ ☆ ☆ ☆

Annual fuel cost of \$3,750
9.6L per 100km

Cost per year is an estimate based on diesel price of \$2.00 per litre and an average distance of 14000 km. Includes Road User Charges (RUC). Emissions and Energy Economy figures standardised to 3P WLTP.

Stock ID: 8881



Ray Scragg Motors Ltd | Phone 06 867 7947 | Email
rayscraggmotors@xtra.co.nz
265 Grey Street, Gisborne, New Zealand



★★★★★
4.93 | 1249 reviews