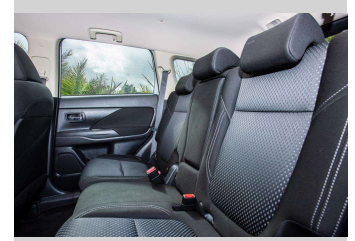
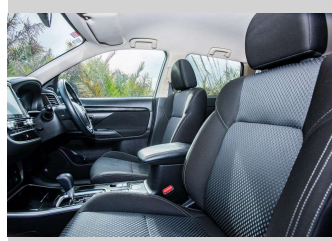
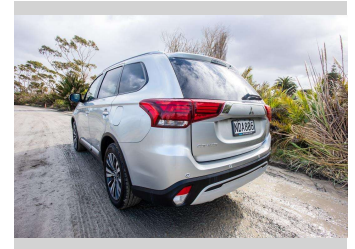
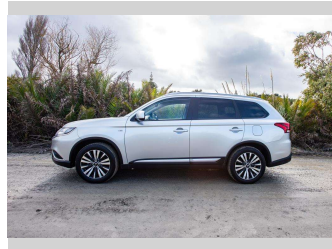


2020 Mitsubishi Outlander LS 2.4P/4WD/CVT



Purchase Price

\$27,500

Includes GST, Registration & Licensing

Finance may be available on this vehicle. Ask one of our friendly staff for more information.

Gain peace of mind with Mechanical Breakdown Insurance. **Ask us how.**

Top features

- » ABS Braking
- » Air Conditioning
- » Blue tooth
- » Car Alarm
- » Central Locking
- » Child seat anchor poin...
- » Climate Control
- » Digital Display
- » Electric Mirrors
- » Electric Mirrors (Retr...
- » Push Button Start
- » Reverse camera
- » Smart Key

Body Style

5 door, Station Wagon

Odometer

107,856 km

Engine

2360 cc, Internal Combustion

Fuel Type

Petrol

Transmission

automatic, 4WD

Wheels

Factory Alloys

VIN

JMFXTGF8WLZ013595

Interior

Cloth

Safety



Based on 2023 UCSR rating for 12-21 models

Reg No.

NDA806

Ext Colour

Silver

History

NZ New

Seats

7 seats, Cloth

CO2 Emissions

★★★★☆

186 grams/km

Energy Economy

★★☆☆☆☆

**Annual fuel cost of \$3,140
8L per 100km**

Cost per year is an estimate based on petrol price of \$2.80 per litre and an average distance of 14000 km. Emissions and Energy Economy figures standardised to 3P WLTP.

Stock ID: 8021



Ray Scragg Motors Ltd | Phone 06 867 7947 | Email
rayscraggmotors@xtra.co.nz
265 Grey Street, Gisborne, New Zealand



★★★★★
4.93 | 1041 reviews