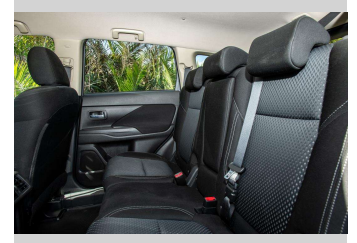
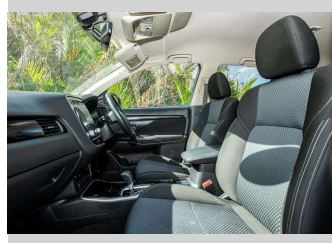
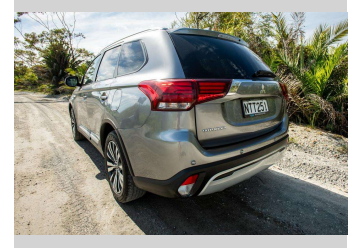


2021 Mitsubishi Outlander LS 2.4P/CVT



Purchase Price

\$26,500

Includes GST, Registration & Licensing

Finance may be available on this vehicle. Ask one of our friendly staff for more information.

Gain peace of mind with Mechanical Breakdown Insurance. **Ask us how.**

Top features

- » Air Conditioning
- » Blue tooth
- » Car Alarm
- » Central Locking
- » Child seat anchor poin...
- » Climate Control
- » Digital Display
- » Electric Mirrors
- » Electric Mirrors (Retr...
- » Reverse camera

Body Style

5 door, Station Wagon

Odometer

125,590 km

Engine

2360 cc, Internal Combustion

Fuel Type

Petrol

Transmission

automatic, 4WD

Wheels

Factory Alloys

VIN

JMFXTGF8WLZ028542

Interior

Cloth

Safety



Based on 2025 UCSR rating for 12-21 models

Reg No.

NTT251

Ext Colour

Grey

History

NZ New

Seats

7 seats, Cloth

CO2 Emissions

★★★★☆

186 grams/km

Energy Economy

★★☆☆☆☆

Annual fuel cost of \$3,140

8L per 100km

Cost per year is an estimate based on petrol price of \$2.80 per litre and an average distance of 14000 km. Emissions and Energy Economy figures standardised to 3P WLTP.

Stock ID: 8956



Ray Scragg Motors Ltd | Phone 06 867 7947 | Email
rayscraggmotors@xtra.co.nz
265 Grey Street, Gisborne, New Zealand



★★★★★
4.93 | 1344 reviews