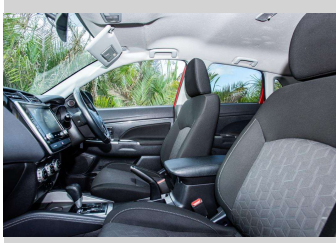
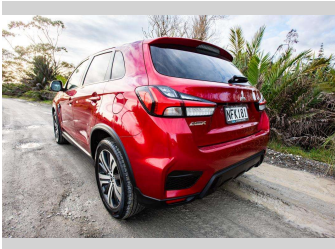
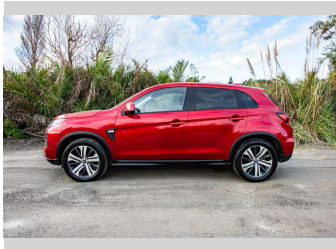


# 2020 Mitsubishi asx LS 2.0P/CVT



## Purchase Price

Includes GST, Registration & Licensing

**\$21,500**

Finance may be available on this vehicle. Ask one of our friendly staff for more information.

Gain peace of mind with Mechanical Breakdown Insurance. **Ask us how.**

## Top features

- » Air Conditioning
- » Blue tooth
- » Car Alarm
- » Central Locking
- » Child seat anchor poin...
- » Climate Control
- » Digital Display
- » Electric Mirrors
- » Electric Mirrors (Retr...
- » Reverse camera

Body Style

**5 door, Station Wagon**

Odometer

**122,910 km**

Engine

**1998 cc, Internal Combustion**

Fuel Type

**Petrol**

Transmission

**automatic**

Wheels

**Factory Alloys**

VIN

**JMFXTGA2WMU006161**

Interior

**Cloth**

Safety



Based on 2024 UCSR rating for 19-22 models

Reg No.

**NFK181**

Ext Colour

**Red**

History

**NZ New**

Seats

**5 seats, Cloth**

CO2 Emissions

★★★★☆☆

**196 grams/km**

Energy Economy

★★★★☆☆

**Annual fuel cost of \$3,330**

**8.5L per 100km**

Cost per year is an estimate based on petrol price of \$2.80 per litre and an average distance of 14000 km. Emissions and Energy Economy figures standardised to 3P WLTP.

**Stock ID: 8673**



Ray Scragg Motors Ltd | Phone 06 867 7947 | Email  
rayscraggmotors@xtra.co.nz  
265 Grey Street, Gisborne, New Zealand

