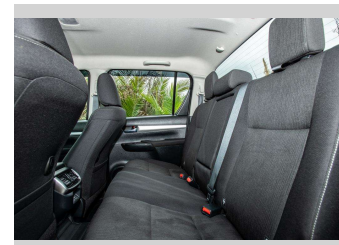
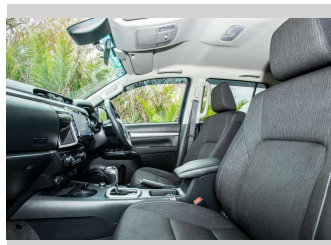
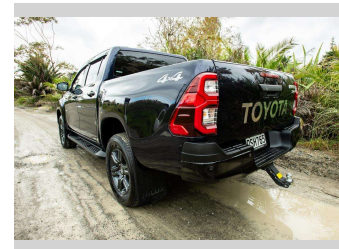
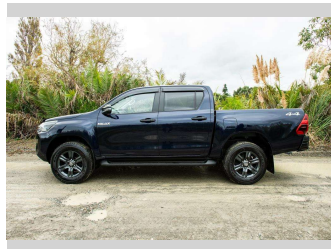


2024 Toyota Hilux SR5 TD DC 2.8DMHT



Purchase Price **\$65,500**
Includes GST, Registration & Licensing

Finance may be available on this vehicle. Ask one of our friendly staff for more information.

Gain peace of mind with Mechanical Breakdown Insurance. **Ask us how.**

- Top features**
- » Air Conditioning
 - » Blue tooth
 - » Car Alarm
 - » Central Locking
 - » Child seat anchor poin...
 - » Climate Control
 - » cruise control
 - » Digital Display
 - » Electric Mirrors
 - » Electric Mirrors (Retr...
 - » Push Button Start
 - » Reverse camera
 - » Running Boards
 - » Smart Key
 - » tuff-deck

Body Style
4 door, Ute

Odometer
30,092 km

Engine
2755 cc, Hybrid


Fuel Type
Diesel

Transmission
automatic, 4WD

Wheels
Factory Alloys

VIN
MROBE3CD806926347

Interior
Cloth

Safety

Based on 2019 ANCAP rating for 19-25 models

Reg No.
QSH765

Ext Colour
Blue

History
NZ New

Seats
5 seats, Cloth

CO2 Emissions
★★★☆☆☆
225 grams/km


Energy Economy
★★☆☆☆☆
Annual fuel cost of \$3,440
8.5L per 100km

Cost per year is an estimate based on diesel price of \$2.00 per litre and an average distance of 14000 km. Includes Road User Charges (RUC). Emissions and Energy Economy figures standardised to 3P WLTP.

Stock ID: 9076



Ray Scragg Motors Ltd | Phone 06 867 7947 | Email rayscraggmotors@xtra.co.nz
265 Grey Street, Gisborne, New Zealand

 **★★★★★**
4.93 | 1320 reviews