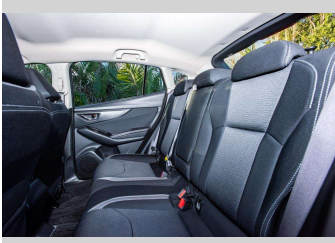
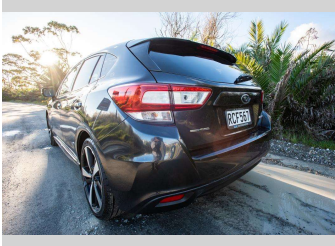


2016 Subaru Impreza 2.0I-S EYESIGHT 4WD



Purchase Price

Includes GST, Registration & Licensing

\$19,500

Finance may be available on this vehicle. Ask one of our friendly staff for more information.

Gain peace of mind with Mechanical Breakdown Insurance. **Ask us how.**

Top features

- » Air Conditioning
- » Blue tooth
- » Car Alarm
- » Central Locking
- » Child seat anchor poin...
- » Climate Control
- » cruise control
- » Digital Display
- » Electric Mirrors
- » Electric Mirrors (Retr...
- » Paddle Gear Shift
- » Push Button Start
- » Reverse camera
- » Smart Key

Body Style

5 door, Hatchback

Odometer

137,523 km

Engine

1995 cc, Internal Combustion

Fuel Type

Petrol

Transmission

automatic, 4WD

Wheels

Factory Alloys

VIN

7AT0GF09X25003288

Interior

Cloth

Safety



Based on 2024 UCSR rating for 16-22 models

Reg No.

RCF567

Ext Colour

Black

History

Ex-Overseas

Seats

5 seats, Cloth

CO2 Emissions

★★★★☆

167 grams/km

Energy Economy

★★★★☆☆

**Annual fuel cost of \$2,780
7.1L per 100km**

Cost per year is an estimate based on petrol price of \$2.80 per litre and an average distance of 14000 km. Emissions and Energy Economy figures standardised to 3P WLTP.

Stock ID: 8539



Ray Scragg Motors Ltd | Phone 06 867 7947 | Email
rayscraggmotors@xtra.co.nz
265 Grey Street, Gisborne, New Zealand