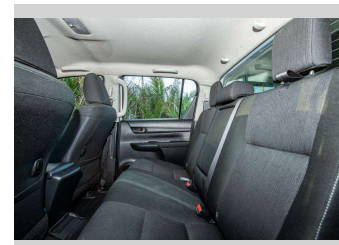
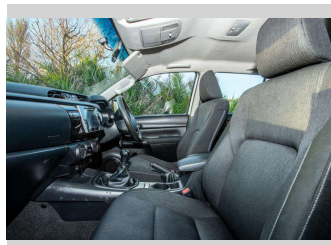
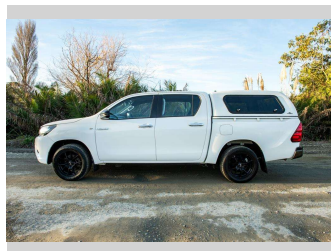


# 2016 Toyota Hilux S TD DC 2.8D/5MT/UT



Purchase Price

**\$24,500**

Includes GST, Registration & Licensing

Finance may be available on this vehicle. Ask one of our friendly staff for more information.

Gain peace of mind with Mechanical Breakdown Insurance. **Ask us how.**

## Top features

- » Air Conditioning
- » Blue tooth
- » Canopy
- » Car Alarm
- » Central Locking
- » Child seat anchor poin...
- » Climate Control
- » Digital Display
- » Electric Mirrors
- » Electric Mirrors (Retr...
- » tuff-deck

Body Style

**4 door, Ute**

Odometer

**209,201 km**

Engine

**2755 cc, Internal Combustion**

Fuel Type

**Diesel**

Transmission

**manual**

Wheels

**17 " Alloys**

VIN

**MR0JA3CD500090457**

Interior

**Cloth**

Safety



Based on 2025 UCSR rating for 15-19 models

Reg No.

**KDA628**

Ext Colour

**White**

History

**NZ New**

Seats

**5 seats, Cloth**

CO2 Emissions

★ ★ ☆ ☆ ☆ ☆

**244 grams/km**

Energy Economy

★ ☆ ☆ ☆ ☆ ☆

**Annual fuel cost of \$3,640  
9.2L per 100km**

Cost per year is an estimate based on diesel price of \$2.00 per litre and an average distance of 14000 km. Includes Road User Charges (RUC). Emissions and Energy Economy figures standardised to 3P WLTP.

**Stock ID: 9134**



Ray Scragg Motors Ltd | Phone 06 867 7947 | Email  
rayscraggmotors@xtra.co.nz  
265 Grey Street, Gisborne, New Zealand



★★★★★  
4.93 | 1353 reviews