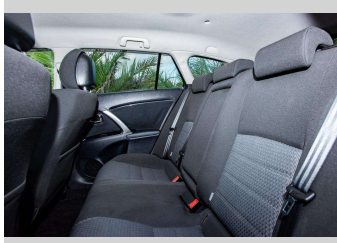
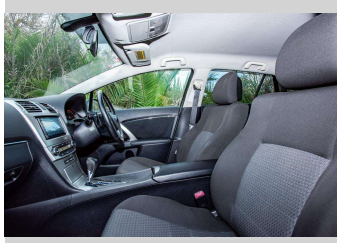
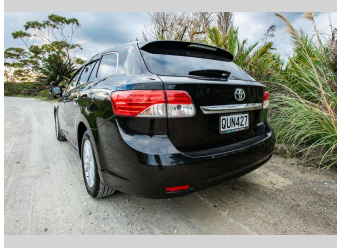
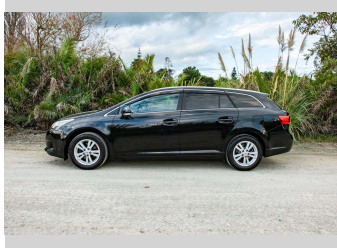


# 2012 Toyota Avensis XI



### Purchase Price

Includes GST, Registration & Licensing

**\$15,500**

Finance may be available on this vehicle. Ask one of our friendly staff for more information.

Gain peace of mind with Mechanical Breakdown Insurance. **Ask us how.**

### Top features

- » Air Conditioning
- » Blue tooth
- » Car Alarm
- » Central Locking
- » Child seat anchor poin...
- » Chip Guard
- » Climate Control
- » Electric Mirrors
- » Electric Mirrors (Retr...
- » Paddle Gear Shift
- » Push Button Start
- » Smart Key

### Body Style

**5 door, Station Wagon**

### Odometer

**135,330 km**

### Engine

**1986 cc, Internal Combustion**

### Fuel Type

**Petrol**

### Transmission

**automatic**

### Wheels

**Factory Alloys**

### VIN

**7AT0H63MX24005296**

### Interior

**Cloth**

### Safety



Based on 2023 VSRR rating

### Reg No.

**QUN427**

### Ext Colour

**Black**

### History

**Ex-Overseas**

### Seats

**5 seats, Cloth**

### CO2 Emissions

★★★★☆☆

**190 grams/km**

### Energy Economy

★★☆☆☆☆

**Annual fuel cost of \$3,210  
8.2L per 100km**

Cost per year is an estimate based on petrol price of \$2.80 per litre and an average distance of 14000 km. Emissions and Energy Economy figures standardised to 3P WLTP.

**Stock ID: 8286**



Ray Scragg Motors Ltd | Phone 06 867 7947 | Email  
rayscraggmotors@xtra.co.nz  
265 Grey Street, Gisborne, New Zealand

