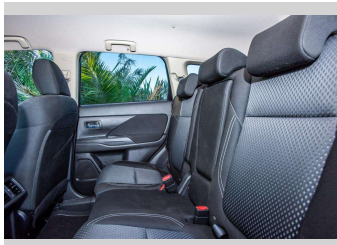
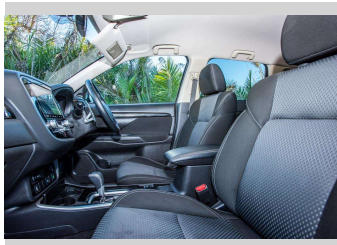
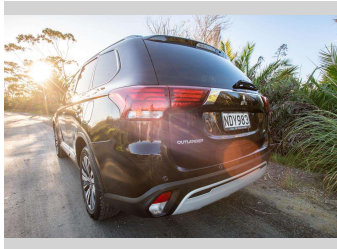
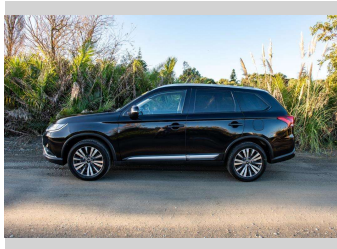
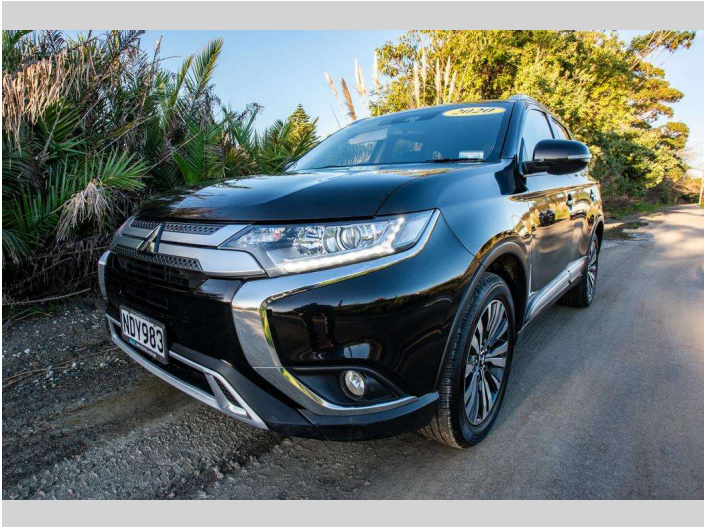


2020 Mitsubishi Outlander XLS 2.4P/4WD/CVT



Purchase Price

Includes GST, Registration & Licensing

\$27,500

Finance may be available on this vehicle. Ask one of our friendly staff for more information.

Gain peace of mind with Mechanical Breakdown Insurance. **Ask us how.**

Top features

- » Air Conditioning
- » Apple CarPlay
- » Blue tooth
- » Car Alarm
- » Central Locking
- » Child seat anchor poin...
- » Climate Control
- » cruise control
- » Digital Display
- » Electric Mirrors
- » Electric Mirrors (Retr...
- » Push Button Start
- » Reverse camera
- » Smart Key

Body Style

5 door, Station Wagon

Odometer

142,831 km

Engine

2360 cc, Internal Combustion

Fuel Type

Petrol

Transmission

automatic, 4WD

Wheels

Factory Alloys

VIN

JMFXTGF8WLZ013937

Interior

Cloth

Safety



Based on 2024 UCSR rating for 12-21 models

Reg No.

NDY983

Ext Colour

Black

History

NZ New

Seats

7 seats, Cloth

CO2 Emissions

★★★★☆

186 grams/km

Energy Economy

★★★★☆☆

**Annual fuel cost of \$3,140
8L per 100km**

Cost per year is an estimate based on petrol price of \$2.80 per litre and an average distance of 14000 km. Emissions and Energy Economy figures standardised to 3P WLTP.

Stock ID: 8504



Ray Scragg Motors Ltd | Phone 06 867 7947 | Email
rayscraggmotors@xtra.co.nz
265 Grey Street, Gisborne, New Zealand

