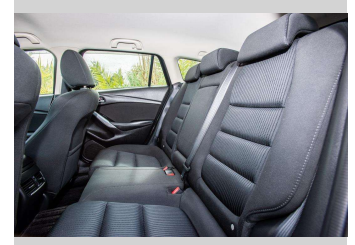
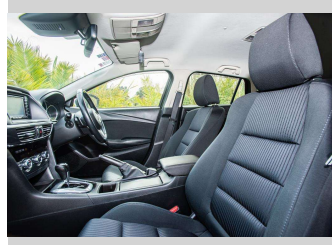
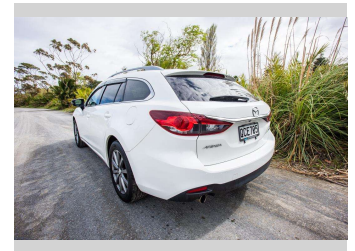
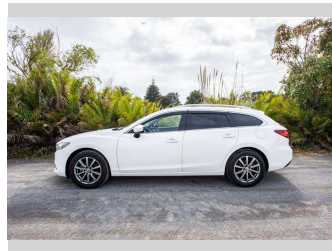


2014 Mazda Atenza 20 S WAGON



Purchase Price

\$19,500

Includes GST, Registration & Licensing

Note: A Clean Car fee/rebate does not apply to this vehicle

Finance may be available on this vehicle. Ask one of our friendly staff for more information.

Gain peace of mind with Mechanical Breakdown Insurance. **Ask us how.**

Top features

- » ABS Braking
- » Air Conditioning
- » Blue tooth
- » Car Alarm
- » Central Locking
- » Child seat anchor poin...
- » Climate Control
- » cruise control
- » Cruise Control
- » Digital Display
- » Electric Mirrors (Retr...
- » Push Button Start
- » Reverse camera
- » Roof Rails
- » Smart Key

Body Style

5 door, Station Wagon

Odometer

117,248 km

Engine

1997 cc

Fuel Type

Petrol

Transmission

automatic

Wheels

Factory Alloys

VIN

7AT0C139X23102278

Interior

Cloth

Safety



Based on 2023 UCSR rating for 12-21 models

Reg No.

QCE705

Ext Colour

White

History

Ex-Overseas

Seats

5 seats, Cloth

CO2 Emissions

★★★★☆

157 grams/km

Energy Economy

★★★★☆☆

Annual fuel cost of \$2,590

6.6L per 100km

Cost per year is an estimate based on petrol price of \$2.80 per litre and an average distance of 14000 km. Emissions and Energy Economy figures standardised to 3P WLTP.

Stock ID: 7613



Ray Scragg Motors Ltd | Phone 06 867 7947 | Email
rayscraggmotors@xtra.co.nz
265 Grey Street, Gisborne, New Zealand



★★★★★
4.93 | 871 reviews