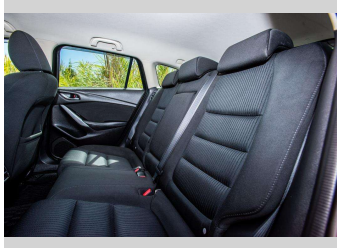
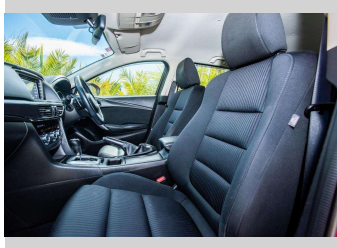
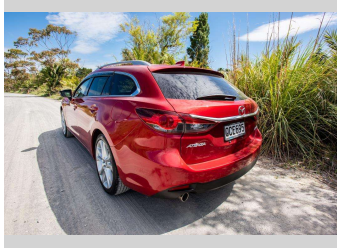


# 2014 Mazda Atenza 20 S WAGON



Purchase Price

Includes GST, Registration & Licensing

**\$21,500**

Finance may be available on this vehicle. Ask one of our friendly staff for more information.

Gain peace of mind with Mechanical Breakdown Insurance. **Ask us how.**

Top features

- » ABS Braking
- » Air Conditioning
- » Blue tooth
- » Car Alarm
- » Central Locking
- » Child seat anchor poin...
- » Climate Control
- » cruise control
- » Digital Display
- » Electric Mirrors
- » Electric Mirrors (Retr...
- » Face Lift Model
- » Paddle Gear Shift
- » Push Button Start
- » Reverse camera
- » Smart Key

Body Style

**5 door, Station Wagon**

Odometer

**88,324 km**

Engine

**1997 cc**

Fuel Type

**Petrol**

Transmission

**automatic**

Wheels

**Factory Alloys**

VIN

**7AT0C139X23102432**

Interior

**Cloth**

Safety



Based on 2023 UCSR rating for 12-21 models

Reg No.

**QCE695**

Ext Colour

**Red**

History

**Ex-Overseas**

Seats

**5 seats, Cloth**

CO2 Emissions

★★★★★☆☆

**157 grams/km**

Energy Economy

★★★★☆☆☆☆

**Annual fuel cost of \$2,590**

**6.6L per 100km**

Cost per year is an estimate based on petrol price of \$2.80 per litre and an average distance of 14000 km. Emissions and Energy Economy figures standardised to 3P WLTP.

**Stock ID: 7617**



Ray Scragg Motors Ltd | Phone 06 867 7947 | Email  
rayscraggmotors@xtra.co.nz  
265 Grey Street, Gisborne, New Zealand

