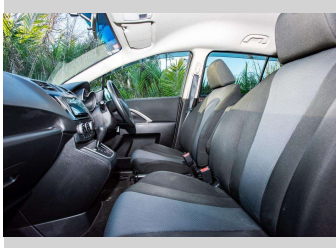
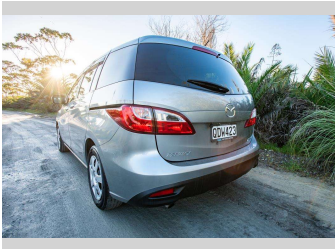


2017 Mazda Premacy 2.0 C



Purchase Price

Includes GST, Registration & Licensing

\$12,500

Finance may be available on this vehicle. Ask one of our friendly staff for more information.

Gain peace of mind with Mechanical Breakdown Insurance. **Ask us how.**

Top features

- » Air Conditioning
- » Blue tooth
- » Car Alarm
- » Central Locking
- » Child seat anchor poin...
- » Climate Control
- » cruise control
- » Digital Display
- » Electric Mirrors
- » Electric Mirrors (Retr...
- » Reverse camera
- » Smart Key

Body Style

5 door, Station Wagon

Odometer

139,236 km

Engine

1997 cc, Internal Combustion

Fuel Type

Petrol

Transmission

automatic

Wheels

-

VIN

7AT0C133X23139210

Interior

Cloth

Safety



Based on 2024 VSRR rating

Reg No.

QDW423

Ext Colour

Grey

History

Ex-Overseas

Seats

7 seats, Cloth

CO2 Emissions

★★★★★☆☆

163 grams/km

Energy Economy

★★★☆☆☆☆

**Annual fuel cost of \$2,740
7L per 100km**

Cost per year is an estimate based on petrol price of \$2.80 per litre and an average distance of 14000 km. Emissions and Energy Economy figures standardised to 3P WLTP.

Stock ID: 8547



Ray Scragg Motors Ltd | Phone 06 867 7947 | Email
rayscraggmotors@xtra.co.nz
265 Grey Street, Gisborne, New Zealand

