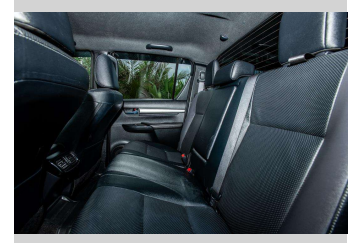
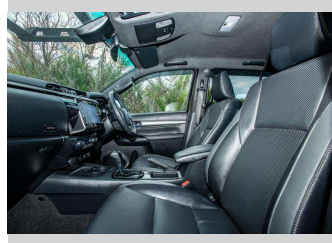
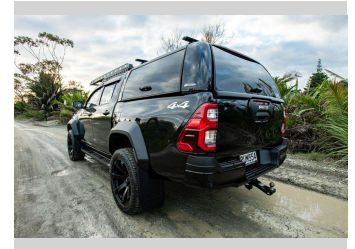
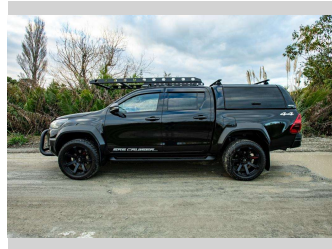


2023 Toyota Hilux SR5 Cruiser TD DC 2. WIDE TRACK



Purchase Price **\$60,500**
Includes GST, Registration & Licensing

Finance may be available on this vehicle. Ask one of our friendly staff for more information.

Gain peace of mind with Mechanical Breakdown Insurance. **Ask us how.**

- Top features**
- » Air Conditioning
 - » Blue tooth
 - » Canopy
 - » Car Alarm
 - » Central Locking
 - » Child seat anchor poin...
 - » Chip Guard
 - » Climate Control
 - » cruise control
 - » Digital Display
 - » Dual Zone Climate Cont...
 - » Electric Mirrors
 - » Electric Mirrors (Retr...
 - » Heated Seats
 - » Navigation
 - » Push Button Start
 - » Reverse camera
 - » Running Boards

Body Style
4 door, Ute

Odometer
166,731 km

Engine
2755 cc, Internal Combustion

Fuel Type
Diesel

Transmission
automatic, 4WD

Wheels
Custom 20" Alloys

VIN
MR0BA3CD800177130

Interior
Cloth

Safety



Based on 2019 ANCAP rating for 19-25 models

Reg No.
PUM554

Ext Colour
Black

History
NZ New

Seats
5 seats, Leather

CO2 Emissions
★ ★ ☆ ☆ ☆ ☆
252 grams/km

Energy Economy
★ ★ ☆ ☆ ☆ ☆
Annual fuel cost of \$3,720
9.5L per 100km

Cost per year is an estimate based on diesel price of \$2.00 per litre and an average distance of 14000 km. Includes Road User Charges (RUC). Emissions and Energy Economy figures standardised to 3P WLTP.

Stock ID: 9204



Ray Scragg Motors Ltd | Phone 06 867 7947 | Email rayscraggmotors@xtra.co.nz
265 Grey Street, Gisborne, New Zealand

★★★★★
4.93 | 1364 reviews